



# SERIES 2110 - SERIES C

SPRING RETURN HIGH PRESSURE PNEUMATIC ACTUATORS  
2" - 20" RESILIENT SEATED BUTTERFLY VALVES

## SERIES 2110 BUTTERFLY VALVE

**SERVICE:** Chilled/Hot Water - 50% Glycol  
**FLOW CHARACTERISTIC:** Modified EQ%  
**SIZES:** 2" - 20"  
**BODY:** Ductile Iron ASTM A536  
**BODY COATING:** Fusion Bonded Epoxy  
**BODY PRESSURE RATING:** ASME/ANSI Class 125  
**WORKING PRESSURE:** 250 PSI for -22°F to 100°F  
**END FITTING:** Lugged ANSI Class 125/150 Flanged  
**DISC:** 304SS  
**STEM:** 416SS  
**SEAT:** EPDM  
**O-RING:** EPDM  
**BUSHING:** PTFE  
**CLOSE OFF:** 100 PSI  
**LEAKAGE:** Bubble Tight Shutoff  
**TEMPERATURE RANGE:** -22°F to 250°F  
**MAX FLUID VELOCITY:** 30 FPS

### ASCO 8551 Direct Mount Solenoid

Watt Rating and Power Consumption

DC Watts	AC Watts	VA Holding	VA Inrush
6.9	6.3	7	10.1

Temperature Range: AC 5°F to 140°F (-15°C to 60°C)  
 DC 5°F to 77°F (-15°C to 25°C)

### ALS-100 Limit Switch (Optional)

Position Indicator	Polycarbonate Dome
Switches	2x SPDT 5A 125-250 VAC micro-switches
Terminal Strip	Standard 8 Points
Cable Entry	2x 1/2" NPT
Mounting	NAMUR Standard shaft and bracket

### Moniteur Series 40/41 Positioner

Moniteur Series 40 - Pneumatic 3-15 PSI

Moniteur Series 41 - Electro-Pneumatic 4-20mA (Optional)

Position Indicator: Flat Dial

### PERFORMANCE

IMPEDANCE	N/A - Pneumatic 250 +/- 15 ohms - EP
REPEATABILITY	+/- 0.5%
HYSTERESIS	1% Maximum
LINEARITY	+/- 1.0% Maximum
SUPPLY RANGE	60 to 100 PSIG
AIR CONSUMPTION	0.26 SCFM - Pneumatic 0.15 SCFM - Electro-Pneumatic
TEMPERATURE RANGE	-4 to 158F / -20 to 70C

## SERIES C ACTUATOR

Rev. D

**MINIMUM AIR SUPPLY:** 40 psi  
**MAXIMUM AIR SUPPLY:** 130 psi  
**TORQUE RANGE:** 124 - 40519 in/lb (~80 psi)  
**HOUSING:** Die Cast Aluminum Alloy  
**TEMPERATURE:** 0°C to +80°C  
 -20°C to +80°C with dry air  
 -40°C to +150°C in special execution

**OPERATING MEDIA:** Compressed filtered air

**Standard NAMUR mounts for optional accessories**

### SPRING RETURN OPERATION (SR)

#### FAIL CCW

Air is supplied to Port A forcing the pistons away from each other (towards ends), rotating the drive pinion counter-clockwise, compressing the springs and exhausting air out of Port B

#### FAIL CW

Air failure (loss of pressure) allows the compressed springs to force the pistons toward each other (towards center), rotating the drive pinion clockwise and exhausting air out of Port A



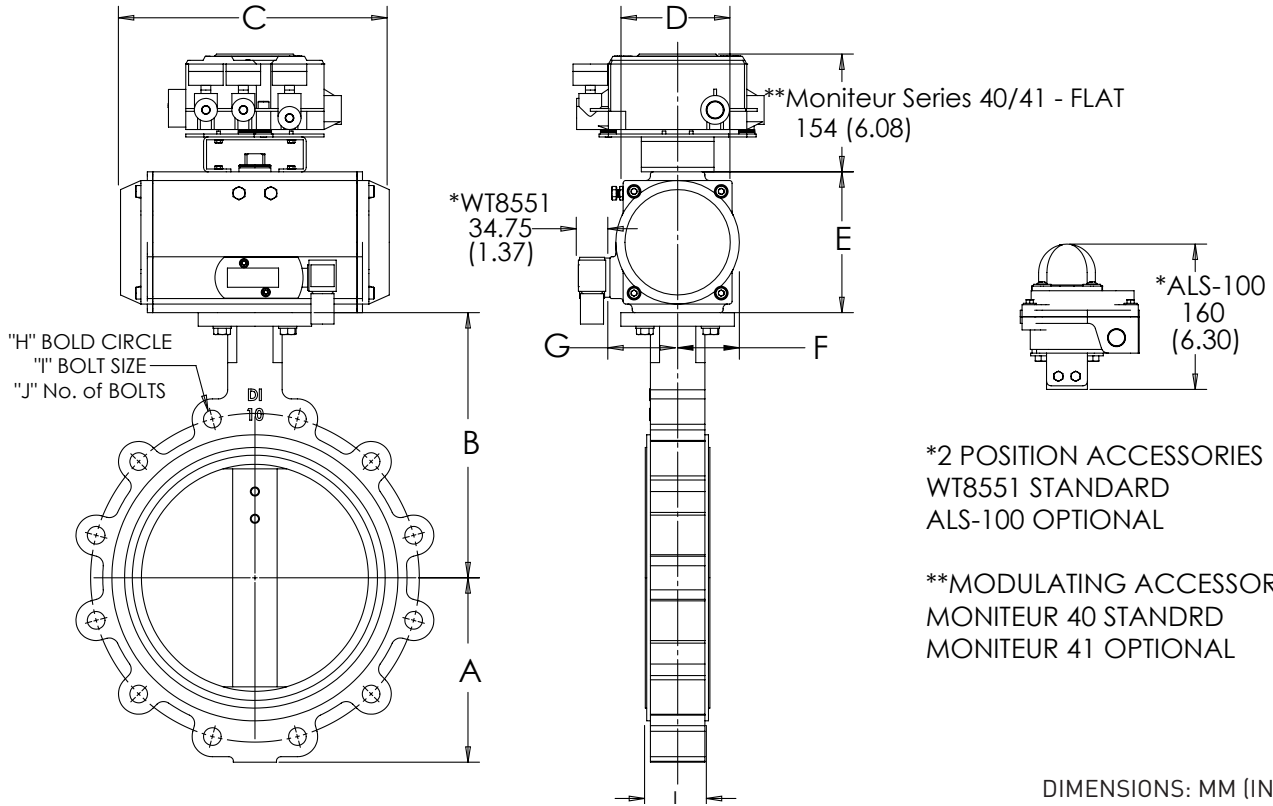
Modulating Configuration



# SERIES 2110 - SERIES C

## SPRING RETURN HIGH PRESSURE PNEUMATIC ACTUATORS 2" - 20" RESILIENT SEATED BUTTERFLY VALVES

### DIMENSIONAL INFORMATION



DIMENSIONS: MM (INCHES)

PSI	VALVE SIZE		ACTUATOR	A	B	H	J x I	L	C	D	E*	F	G
	INCH	DN											
100 PSI	2	50	C-SR063	80 (3.15)	161 (6.34)	4.75	4 x 5/8 - 11	43 (1.69)	168 (6.61)	72 (2.83)	87.5 (3.44)	36 (1.42)	47 (1.85)
	2.5	65	C-SR083	89 (3.50)	175 (6.89)	5.5	4 x 5/8 - 11	46 (1.81)	204 (8.03)	92 (3.62)	108.7 (4.28)	46 (1.81)	57 (2.24)
	3	75	C-SR083	95 (3.74)	181 (7.13)	6	4 x 5/8 - 11	46 (1.81)	204 (8.03)	92 (3.62)	108.7 (4.28)	46 (1.81)	57 (2.24)
	4	100	C-SR092	114 (4.49)	200 (7.87)	7.5	8 x 5/8 - 11	52 (2.05)	262 (10.31)	98 (3.86)	116.5 (4.59)	50 (1.97)	58.5 (2.30)
	5	125	C-SR092	127 (5.00)	213 (8.39)	8.5	8 x 3/4 - 10	56 (2.20)	262 (10.31)	98 (3.86)	116.5 (4.59)	50 (1.97)	58.5 (2.30)
	6	150	C-SR125	139 (5.47)	226 (8.90)	9.5	8 x 3/4 - 10	56 (2.20)	301 (11.85)	127.5 (5.02)	155 (6.10)	67.5 (2.66)	74.5 (2.93)
	8	200	C-SR125	175 (6.89)	260 (10.24)	11.75	8 x 3/4 - 10	60 (2.36)	301 (11.85)	127.5 (5.02)	155 (6.10)	67.5 (2.66)	74.5 (2.93)
	10	250	C-SR140	203 (7.99)	292 (11.50)	14.25	12 x 7/8 - 9	68 (2.68)	390 (15.35)	137.5 (5.41)	172 (6.77)	75 (2.95)	77 (3.03)
	12	300	C-SR160	242 (9.53)	337 (13.27)	17	12 x 7/8 - 9	78 (3.07)	458 (18.03)	158 (6.22)	197 (7.76)	87 (3.43)	87 (3.43)
	14	350	C-SR190	267 (10.51)	368 (14.49)	18.75	12 x 1 - 8	78 (3.07)	525 (20.67)	189 (7.44)	306.2 (12.06)	103 (4.06)	103 (4.06)
	16	400	C-SR210	297 (11.69)	400 (15.75)	21.25	16 x 1 - 8	102 (4.02)	532 (20.94)	210 (8.27)	255 (10.04)	113 (4.45)	113 (4.45)
	18	450	C-SR240	318 (12.52)	422 (16.61)	22.75	16 x 1 1/8 - 7	114 (4.49)	602 (23.70)	245 (9.65)	471.4 (18.56)	130 (5.12)	130 (5.12)
	20	500	C-SR270	348 (13.70)	480 (18.90)	25	20 x 1 1/8 - 7	127 (5.00)	722 (28.43)	273 (10.75)	478.4 (18.83)	147 (5.79)	147 (5.79)

\* INCLUDES LINKAGE AS REQUIRED