



Testing Standard:

- AWWA C517

Sizes*:

- 3in (DN75) - 72in (DN1800)

Pressure Ratings:

- 150 psi , 175 psi & 200 psi*

Laying Lengths:

- AWWA C517
- ANSI/ASME B16.10

Connection Options*:

Flange

- ANSI/ASME B16.1 Class 125
- ANSI/AWWA C110/21.10

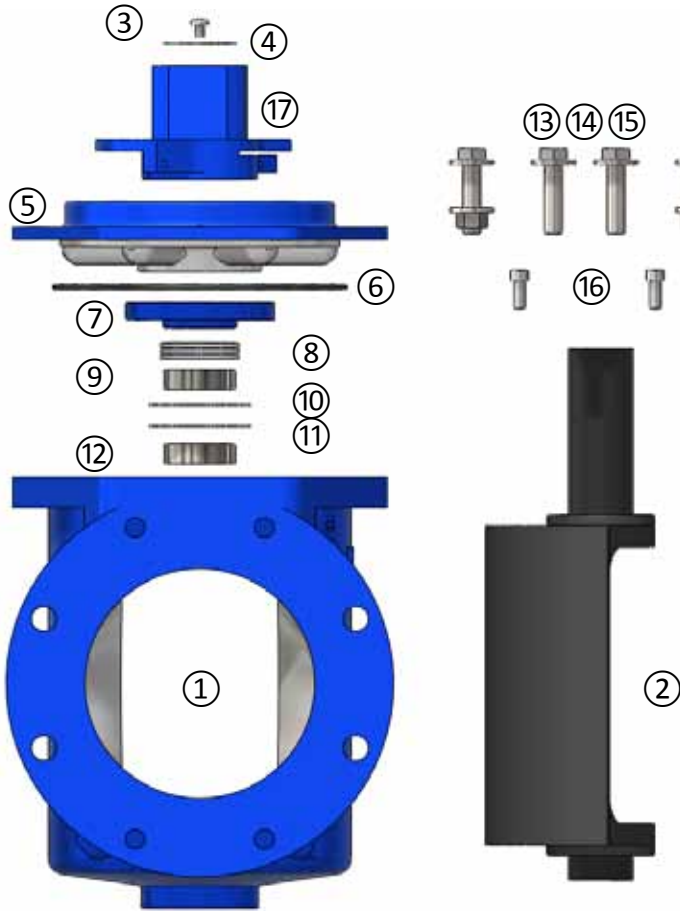
Mechanical Joint

- ANSI/AWWA C111/A21.11

*Other options available upon request

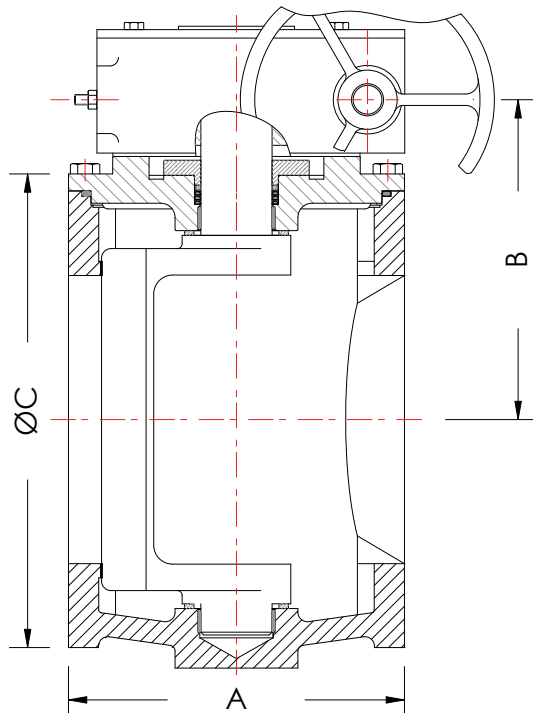
- The VSI Series AWWA C517 Resilient Seated Eccentric Plug Valve is designed for today's modern water and wastewater treatment plants. Our valves meet or exceed the current AWWA C517 standard. VSI has both flanged and mechanical joint installation options available.
- The Series AWWA C517 Resilient Seated Eccentric Plug Valve line has completed the AWWA Proof of Design tests, and every valve is tested at the factory. Leakage testing from both directions is standard.
- The VSI stem packing includes multiple V-Ring stem seals for a low maintenance seal. We also incorporate an upper and lower grit seal between the plug body and the valve body to prevent any foreign matter into the shaft area. These not only lower torques, but prolong the life of the valve.
- The ductile iron plug is fully encapsulated with high performance EPDM rubber by an advanced vulcanization process. This provides a permanent bond, maintains tight tolerances on the wedge, and provides excellent sealing performance. VSI's vulcanization process passes the ASTM D429 adhesion test.
- All VSI AWWA C517 Plug Valves come standard with rectangular ports with improved internal contours for a reduction in turbulence and pressure drop through the valve.

Materials List (NPS3 - NPS72)



NO.	NAME	MATERIAL	OPTIONS
1	Body	ASTM A536 65-45-12	ASTM A126 B
2	Plug	ASTM A536 + EPDM	ASTM A126 + EPDM
3	Screw	SS304	Zinc Plated CS, SS316
4	Washer	SS304	Zinc Plated CS, SS316
5	Cover	ASTM A536 65-45-12	ASTM A126 B
6	Body O-Ring	NBR	Buna-N, Viton, EPDM
7	Packing Gland	ASTM A536 65-45-12	ASTM A126 B
8	V-Cup Seals	EPDM	Buna-N, Viton, EPDM
9	Upper Bushing	SS + PTFE	Bronze, AL-Bronze
10	Upper Grit Seal	PTFE	Viton, Nylon
11	Lower Grit Seal	PTFE	Viton, Nylon
12	Lower Bushing	SS + PTFE	Bronze, AL-Bronze
13	Bolts	SS304	Zinc Plated CS, SS316
14	Washers	SS304	Zinc Plated CS, SS316
15	Nuts	SS304	Zinc Plated CS, SS316
16	Gland Screws	SS304	Zinc Plated CS, SS316
17	Torque Collar	ASTM A536 65-45-12	ASTM A126 B

General Dimensions (inches)



Size	DN(mm)	A	B	ØC
3	80	8	7 1/8	7 1/2
4	100	9	8	9
6	150	10 1/2	10	11
8	200	11 1/2	12 3/8	13 1/2
10	250	13	12 5/8	16
12	300	14	14 5/8	19
14	350	17	15	21
16	400	17 3/4	17 3/4	23 1/2
18	450	21 1/2	19 1/8	25
20	500	23 1/2	20 1/2	27 1/2
24	600	42	23	32
30	750	51	27 1/2	38 3/4
36	900	60	33	46
42	1050	84	37 5/8	53
48	1200	96	37 5/8	59 1/2